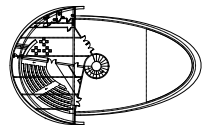
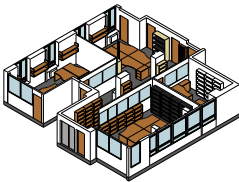
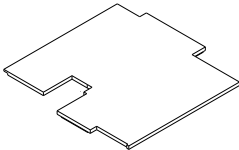


PORTFOLIO

jabem koo

Architect



PREFACE

It is not common to begin writing a portfolio of varied projects with one that deals with a place of rest, silence, serenity, where death is omnipresent. However this is the diploma project, which has great importance in my way I regard and design architecture.

From ancient times to today, builders and architects seized on this subject, and responded to aesthetic, structural challenges. Some like Etienne Louis Boullé or Enric Miralles proposed utopias. Those of the cenotaph gigantic mass against the gigantic « land art ».

My project of an urban cemetery in Nice is a kind of utopia intended as a compromise between many architectural traditions but also as an essay of a qualitative architecture, with personality, in a realistic context.

Through my work as an architecture student and those carried out professionally, I often sought, when it was possible, bold forms but respecting reality, and constraints, while trying to improve it.

Taking care of urban wastelands like in Versailles, Boulogne Billancourt, or boulevard de Grenelle, supporting the development of new cities like in Nice and Shanghai, or upgrading the architectures of places, their functionality like in Pantin and its swimming pool... Designing or renovating hospital buildings to improve the daily lives of people, here are the projects that illustrate this portfolio.

JBK

SUMMARY

PREFACE. p1

SUMMARY. p2

REST IN NICE : THINKING OF AN URBAN CEMETERY IN A FRENCH CITY. p3

LEA : CONTEST FOR A ELDERLY HOUSING COMPLEX IN POUILLY EN AUXOIS. p7

LEA : CONTEST FOR THE EXTENSION OF THE SURGERY BLOC OF THE BLOIS HOSPITAL CENTER. p10

LEA : EXTENSION OF AN INDIVIDUAL HOUSING IN RUEIL MALMAISON. p13

LEA : RENOVATION OF A PSA STORE IN VENISSIEUX. p16

P... : RENOVATION OF AN OFFICE SLAB. p19

ZAC DES CHANTIERS PROJECT IN VERSAILLES : A PROJECT FROM A WALL. p21

AN ARCHITECTURE SCHOOL : A STEEL WHALE. p23

A MULTIMODAL POLE OF TRANSPORTATION IN NICE : CONTROLLING FLOWS AND LANDSCAPES. p25

SWIMMING POOL IN PANTIN : PLUG IN FOR REHABILITATING A SWIMMING POOL. p27

SHANGHAI : TRANSPORTATION SYSTEM IN A MEGALOPOLIS . p29

HOUSINGS IN THE BOULEVARD DE GRENELLE : LIVING THE CITY, LIVING THE ALLOTMENT. p31

URBAN PROJECT IN VERSAILLES : HERITAGE, CONTEMPORARY AND RELATIONSHIP WITH WATER. p33

URBAN PLANNING PROJECT IN PANTIN : A NEW RELATIONSHIP BETWEEN CITY AND CANAL. p35

REST IN NICE : THINKING OF AN URBAN CEMETERY IN A FRENCH CITY

Instead of taking away the deaths from the cities, maintaining them in a generalized disregard, we choose to make a project of cemetery integrated and opened in the city?

It is the approach chosen for this diploma's project, to make in Nice, in the Plaine du Var. We take advantage of future estate potential and population growth.

The concept of the project is an urban park, synthesizing the existing typologies of cemeteries in Europe:

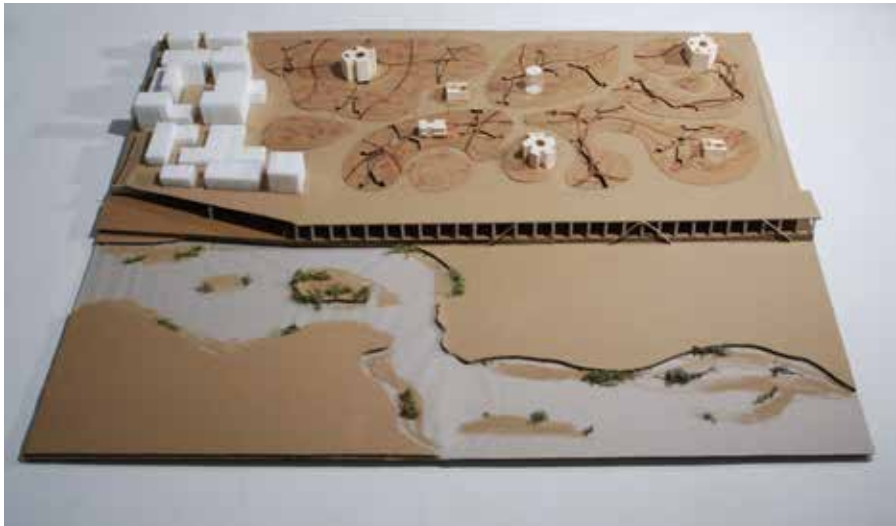
- the Latin cemetery, closed by fences and architectural (Milan, Genoa).
- the Nordic cemetery, with vegetal landscapes but architecturally sober.

This park is compound by several groves, dedicated to relaxation, leisure activities, but welcoming vegetal « pockets » reserved for graves. Canyons dig these groves, like trenches. These canyons propose a more mineral environment in contrast with the park's vegetated environment.

Buildings, like "folies" decorate those groves. They serve as marks, but also in the functioning of the cemetery :

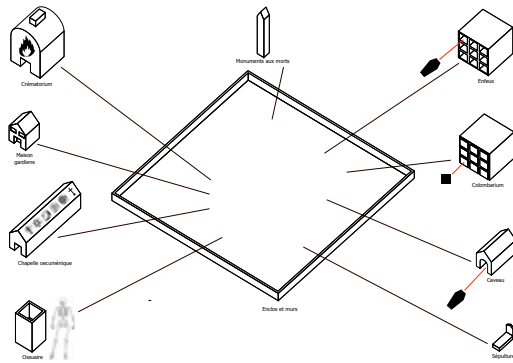
- columbariums, organized in alveoli closed on themselves.
- funeral homes (crematorium + ceremonies), with their square plans, drilled by the cylindrical volumes of the ceremonies rooms.
- the ossuary, a glass building, becoming a lantern at night. The glass skin protects the bone gabions and technical gallery. This bone gabions gives to the building, an evolutionary character, with the accumulation of bones.

To sum up, this project tries to integrate the increasing demands of the French population, in terms of ecological, money-saving solutions, while maintaining the universal character of French cemeteries.









LEA : CONTEST FOR A ELDERLY HOUSING COMPLEX IN POUILLY EN AUXOIS

Non-constructed project

This project is about a call for bids that involves only 5 groups to design and realize an elderly housing in Pouilly en Auxois. This housing of 4500 square meters houses 72 beds, with a PASA of 14 beds, and a hosting space of 6 beds, a central feeding production unit that can make 200 meals per day, and finally a laundry unit. The estimated amount of the construction works is around 7 M €.

In terms of architecture, we chose a contemporary approach with a horizontal building which pedestal is clad with vertically cut multicolour metal sheets. The entablature is made with concrete covered with stone colour cement after being isolated. Charcoal grey vertical rifts come out the façade forward and backward, diminish the feeling of horizontality and make the façade living. The wooden meshes on the west and east façades are sun breakers. The location is southwards to welcome the visitors whereas the logistic area is pushed on the north.

The project favours visual openings as the building body is organised around two patios that bring light and serve as healing gardens. For the interior organisation, the healing service is located in the middle part, the PASA is independent from the rest.

Client : GCS Amplitude.EHPAD Les Arcades

Mission : Contest, DD

Location : Pouilly en Auxois (Côte d'Or)

General construction firm : LEON GROSSE

Architect : LEA

Expertise firm : SNC LAVALIN

Environnemental expertise firm: PENICAUD

Acoustician : ACOUPHEN

Surface : 5 400 m²

Budget : 7,2 M € without tax

Delivery : non delivered





LEA : CONTEST FOR THE EXTENSION OF THE SURGERY BLOC OF THE BLOIS HOSPITAL CENTER

Contest won

The goal of this contest is the extension of the surgery bloc of the Blois Hospital Centre. This extension contains storage units for the pharmacy in the ground floor, two surgery blocs in the first floor, a pathologic anatomy laboratory in the second, and technical rooms in the third, inside a linear building fixed to the existent and next to a fireman ramp. The simple and straight volumes follow the urban planning rules and also respond to the surroundings' buildings.

Its North-South orientation allows natural lighting of the East and West facades. The rooms leaned against the ramp enjoy lighting through the patios, which are middle zones, naturally bringing freshness on summer and warmth on winter. The South-East of the building has an accessible terrace. The search of a high environmental quality architecture lead to the choice, for the facades, of TRESPA type wood-resin panels and natural zinc panels, totally sustainable materials.

Client : C.H Blois
Mission : Contest, DD
Location : Blois (Loir et Cher)
Architect : LEA
Expertise firm : ICADE
Surface : 1 128 m²
Budget : 2,0 M € without tax
Delivery : 2013





© LEA



© LEA



LEA : EXTENSION OF AN INDIVIDUAL HOUSING IN RUEIL MALMAISON

Non-constructed project

It is an extension project for a pavilion from the 70s, of 77 square meters, located in Rueil Malmaison, constructed in a site of 570 square meters wide. The landowner wished to create this extension to live in it and leave the existing house to his parents and destroy it later. The most important point to underline is the difficulty to find a compromise between the interests of the client and those of the city authorities (will to have two housing with a tight budget of 150 000 € versus strict town planning rules...).

The extension inserts a new building, traditionally shaped (two sided roof) and perpendicular to the existent building. Due to the demands from the city, a reorganisation of the rooms was studied. The extension will be built with breezeblocks and isolated from outside, and cladded with cast cement. The colour would be white to match with its surroundings. The roof will be covered with small tiles.

Client : M. H

Mission : DD

Location : Rueil Malmaison (Hauts de Seine)

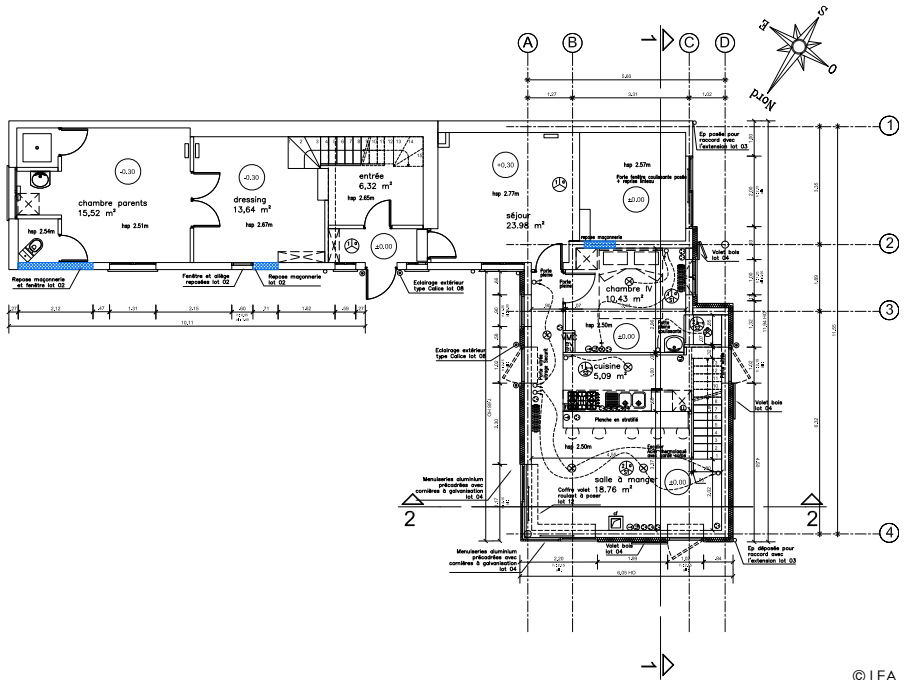
Architect : LEA

Surface : 98 m²

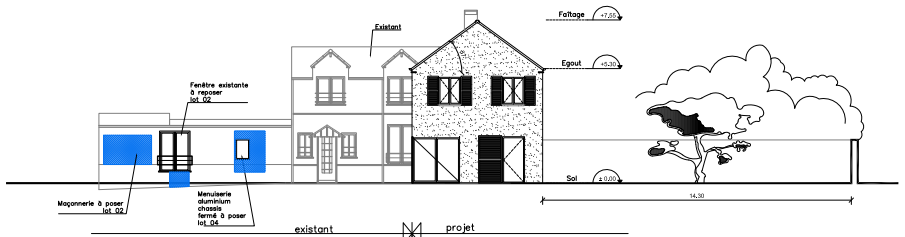
Budget : 152 K € without tax

Delivery : non delivered





© LEA



© LEA

LEA : RENOVATION OF A PSA STORE IN VENISSIEUX

Constructed project

This is a competition for the rehabilitation of the PSA store in Venissieux (69) following a functional reorganisation inside the building.

A single storey building houses the mechanical workshops, exhibition halls and ancillary services for PSA. In contrast to this ground floor, a 2 storeys high bar houses the offices. The main entrance is through the north façade which is the commercial entrance. Other entrances on this façade are reserved for services such as the Chrono service.

The façade is made of a steel cladding, white on the ground floor, while on the office bar, the façades are made of a row of enamelled panels and two rows of Italian style aluminium windows.

As we deal with a renovation, the modifications on the façade only concern the north façade of the ground floor, as well as the west and east façades of the office bar :

- On the north façade, signs the new PSA signs replace the old ones.

- For the desk bar, only the exterior windows are changed in the first floor, and replaced by Italian style aluminium windows.

The accesses to the site are changed due to the parking needs generated by the extension.

Client : PSA Venissieux

Mission : DD, CD, CA

Location : Vénissieux (Rhône)

Architect : LEA

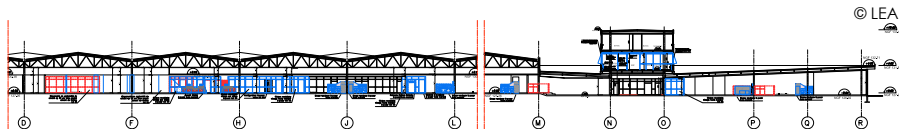
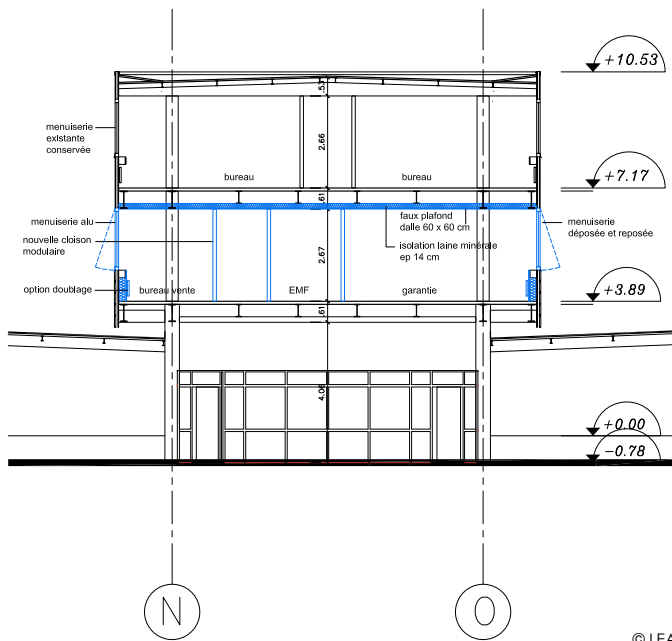
Surface : 50 000 m²

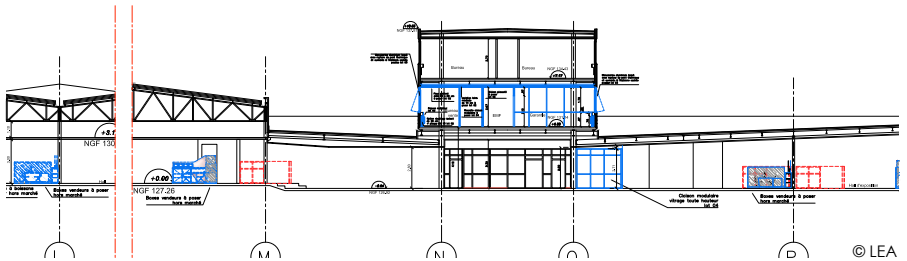
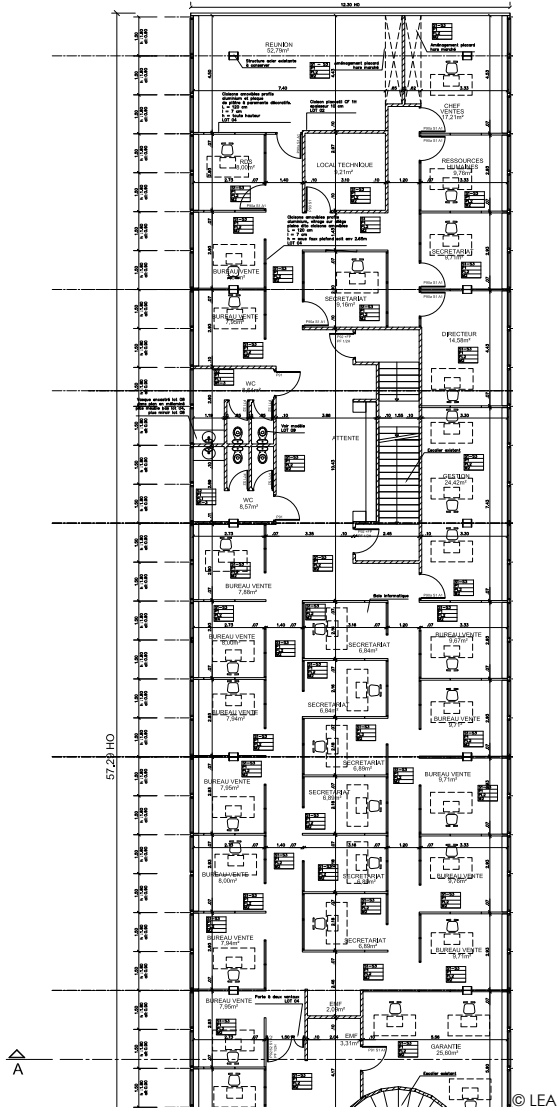
Budget : 500 K € without tax

Delivery : 2013



© LEA

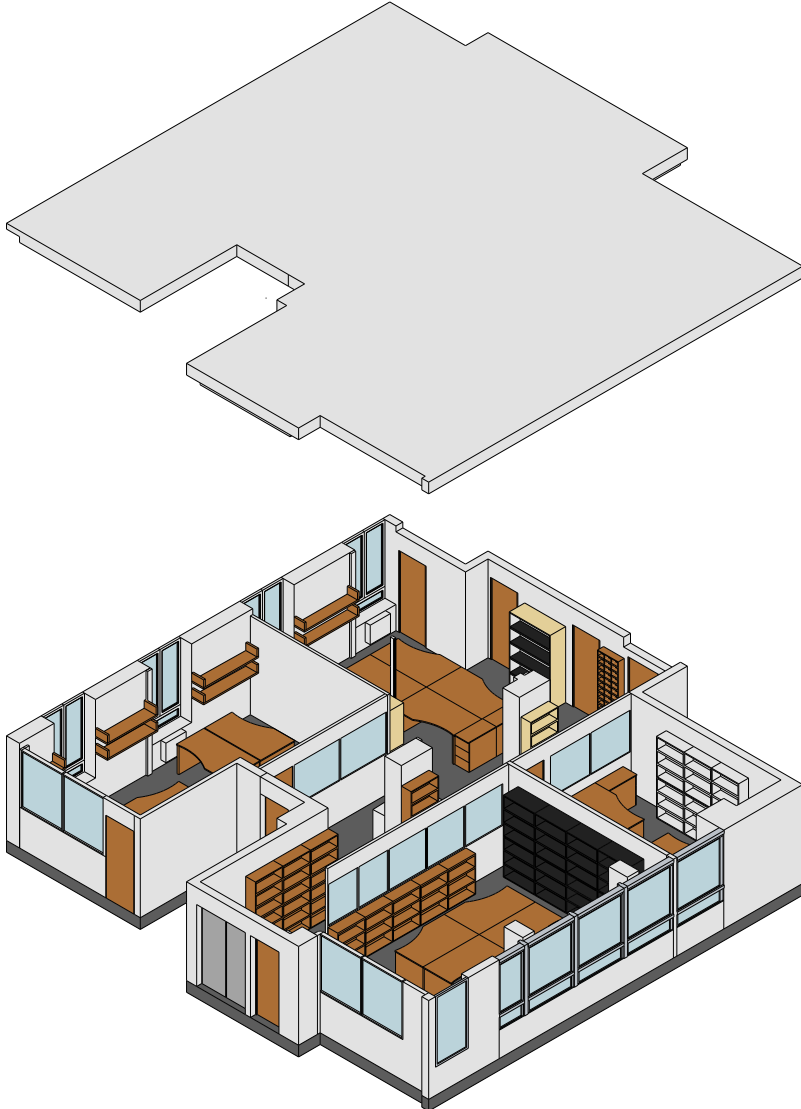


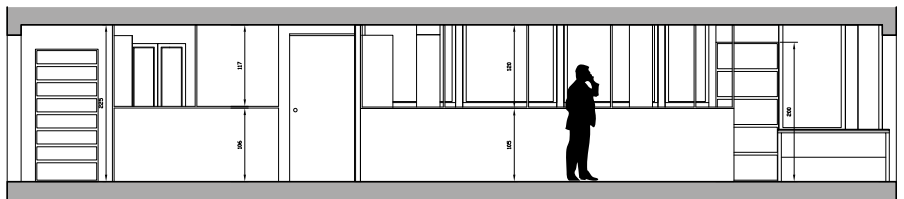
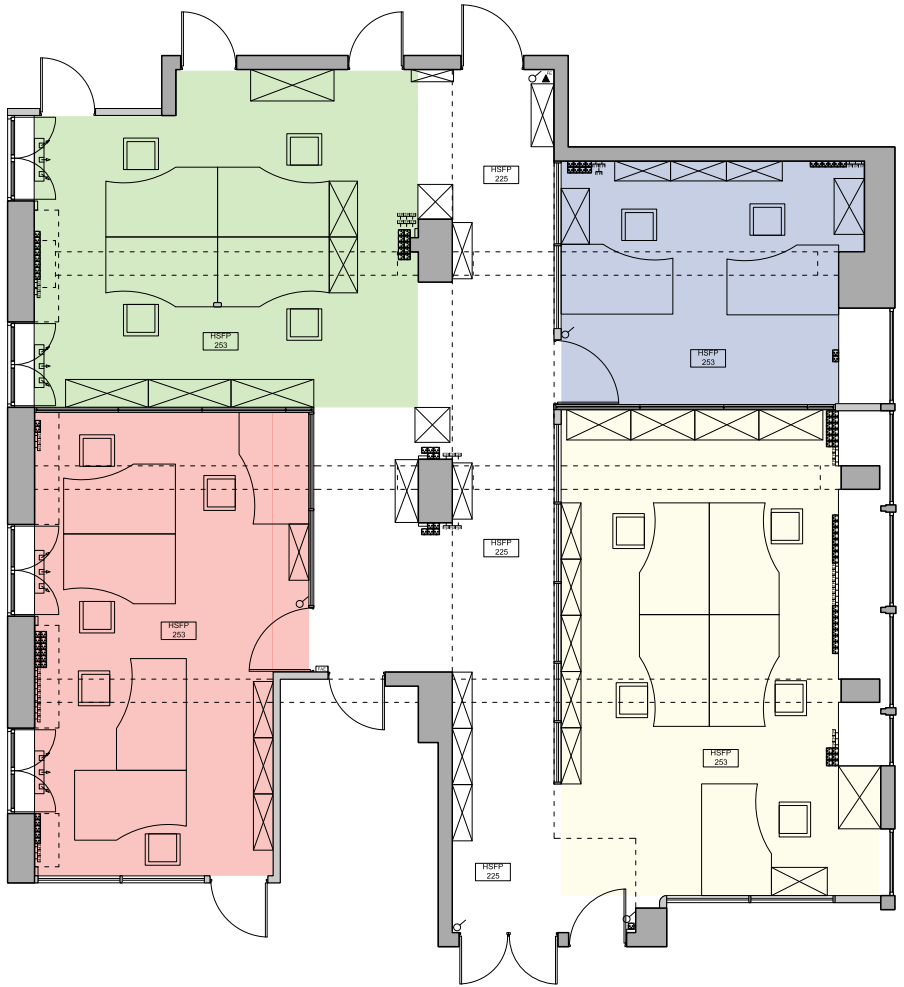


P... : RENOVATION OF AN OFFICE SLAB

Non-constructed project

The P... company wishes to reorganize an office slab in Paris. The existent state shows a slab with 4 ill demarcated zones, a situation that brings confusion for the daily using and lack of intimacy and focus for the workers. This project proposes with the addition and displacement of supplementary half windowed walls to demarcate better the spaces and offer additional storage units.





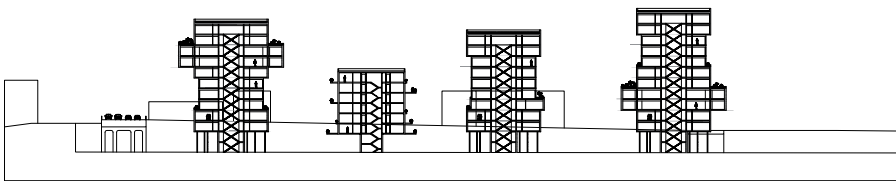
ZAC DES CHANTIERS PROJECT IN VERSAILLES : A PROJECT FROM A WALL

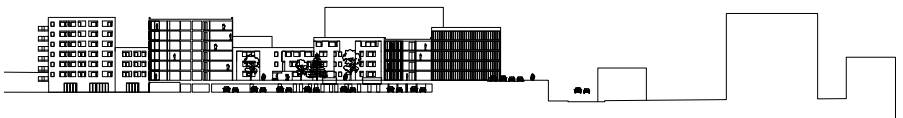
with C. Buzot

The ZAC Versailles Chantiers project is treated with great care by city's authorities of Versailles. It is located near a multimodal hub of public transportation system, the Versailles Chantiers Station. The whole site is currently a railroad fallow land recovered by the city's authorities, who want to make a program of collective housings and offices. The site is split in two by the future bus station.

We have observed some eye-catching elements like the Gobert ponds, the Gonards mound, and noticed a huge stone wall, an element unifying the whole site. With this wall and its surroundings, thought as a causeway, we decided to make two different projects :

- a project composed of two "islets", near the station, to maintain a continuity of the built front.
- a project composed of tower plots, on the other half of the site, to free grounds and arrange a big garden.





AN ARCHITECTURE SCHOOL : A STEEL WHALE

with J-A. Collard, G. Lelassieux and P-A. Lemaire

From both platforms of the capital and the island of the Cité, go down the river, outside walls, to finally find the island Seguin. Full of a rich past, stood there the factories of an French car industry icon...

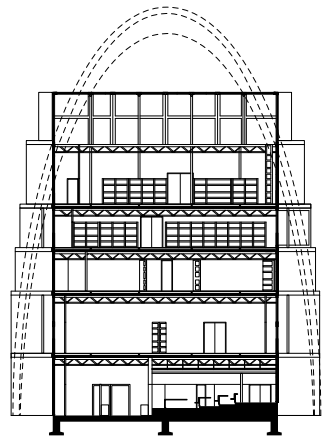
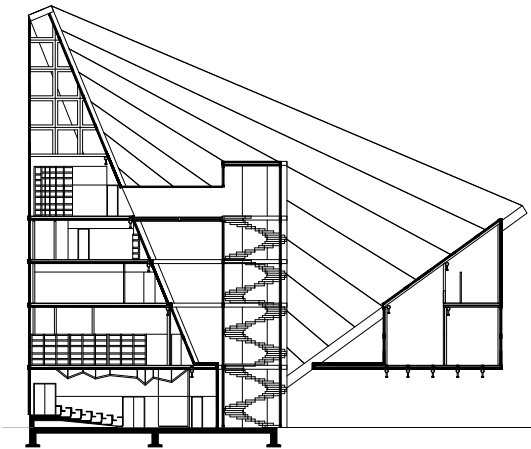
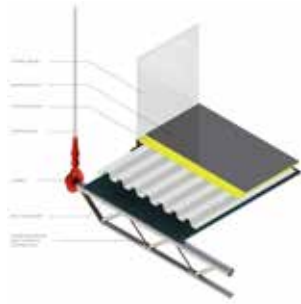
Nowadays, we have the current concern to make this meaningful place, towards «an island of all arts» - we would like to make it with the technics, in a synthesis which is architecture. Like the whale of the Native American founding myth, generating the world by dreaming about it, the mythical cetacean inspired the project ...

Rising at the end of the island, the main skeleton is constituted of two arches ...

It is from this base that the whole building raises itself. Bringing in a set of posts and beams, then combined by a rise of thin steel nervures, the facade in front of the Seine evokes the stomach of the animal, which length is accompanied with the grooves and shelf spaces of its skin ... The architecture is voluntarily shown, speaking about itself so that the place of the learning is itself material of observations and studies. The steel shown in its tensions, furies and characteristic stabs...

(From the collective text of presentation).





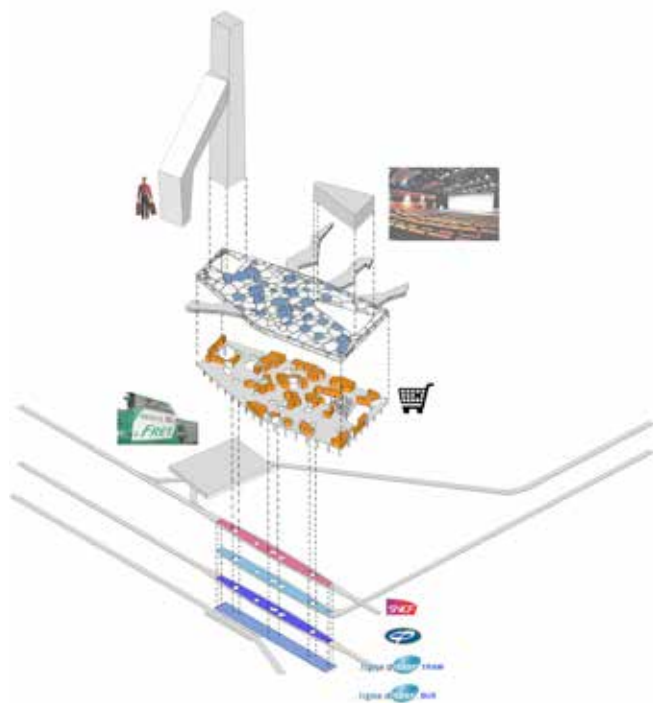
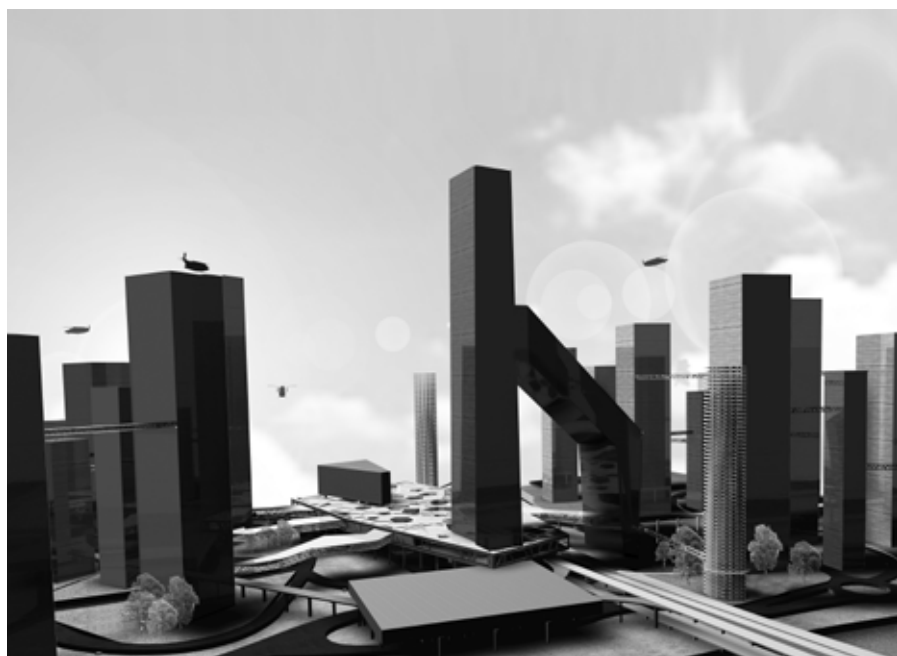
A MULTIMODAL POLE OF TRANSPORTATION IN NICE : CONTROLLING FLOWS AND LANDSCAPES

with M. Lutzler

We established a masterplan from reflections which concern the public transportation system of Nice. We took into account the tramway routes decided by the municipality, offer the perspective of a commercial and cruising harbour and we make the railroad line of Chemin de fer de Provence land into the new multimodal station, created by the future coming of the high speed railroad line LGV to Nice. Amongst the 4 big exchange poles, we focus on the airport - city entrance, the most important as the urban frame is the territory of the Plaine du Var, the new urban expansion territory in Nice and also a French National Interest Urban Planning Operation.

Our architectural project consists in developing strata of transportation systems surmounted by a slab covered with a steel net which hubs at the same time shopping malls and the station. A congress centre and a hotel tower are planned.



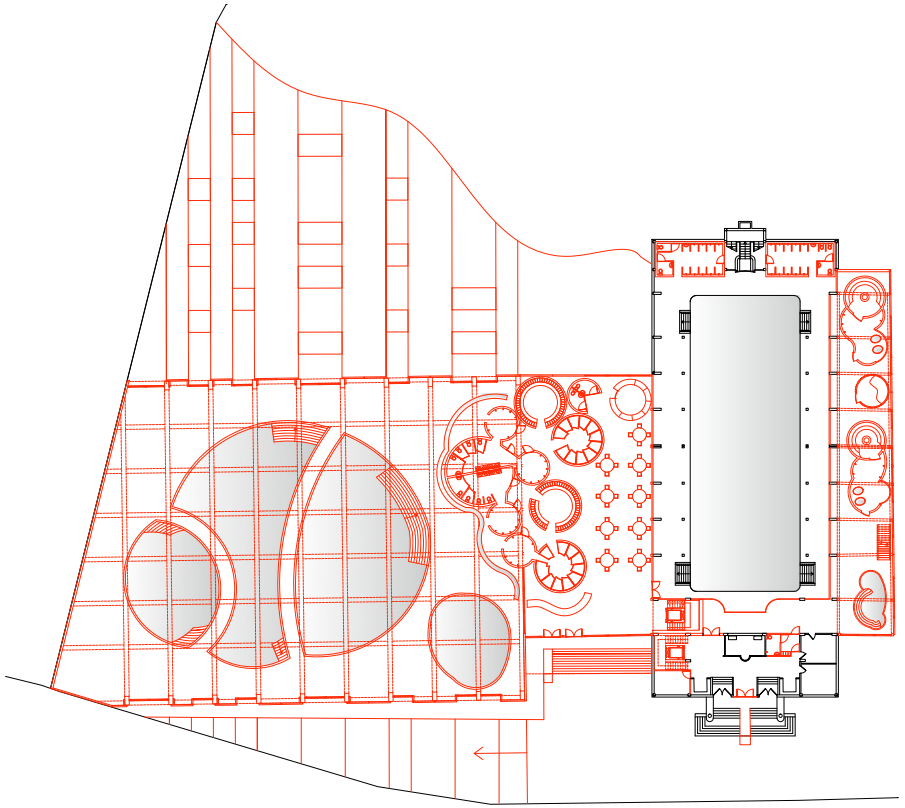


SWIMMING POOL IN PANTIN : PLUG IN FOR REHABILITATING A SWIMMING POOL

This project's goal was to make an extension (aquapark and common baths) for the municipal swimming pool of Pantin. After visiting the existent swimming pool, it seemed this beautiful building (powerful volumes, well-kept equipment) could not provide the conditions of a modern swimming pool. The spatial frame is too stiff to easily reorganize it. Our party is to connect the existent with two new major poles, an aquapark and a common baths wing as we connect a USB key.

Then, we were able to restore an urban continuity and to reorganize more efficiently this swimming pool. Indeed there is a new centralized entrance which allows simultaneous and autonomous running of both swimming pools. The former entrance is, now, devolved to the common baths wing. Contrary to the stiff organization of the former swimming pool, we decided to organize the aquapark, in a rather different way using curves to create a contrast with the existent. The facade is composed of glass blades and Corten steel covered blades, which unify facade and roof, and create lighting effects.



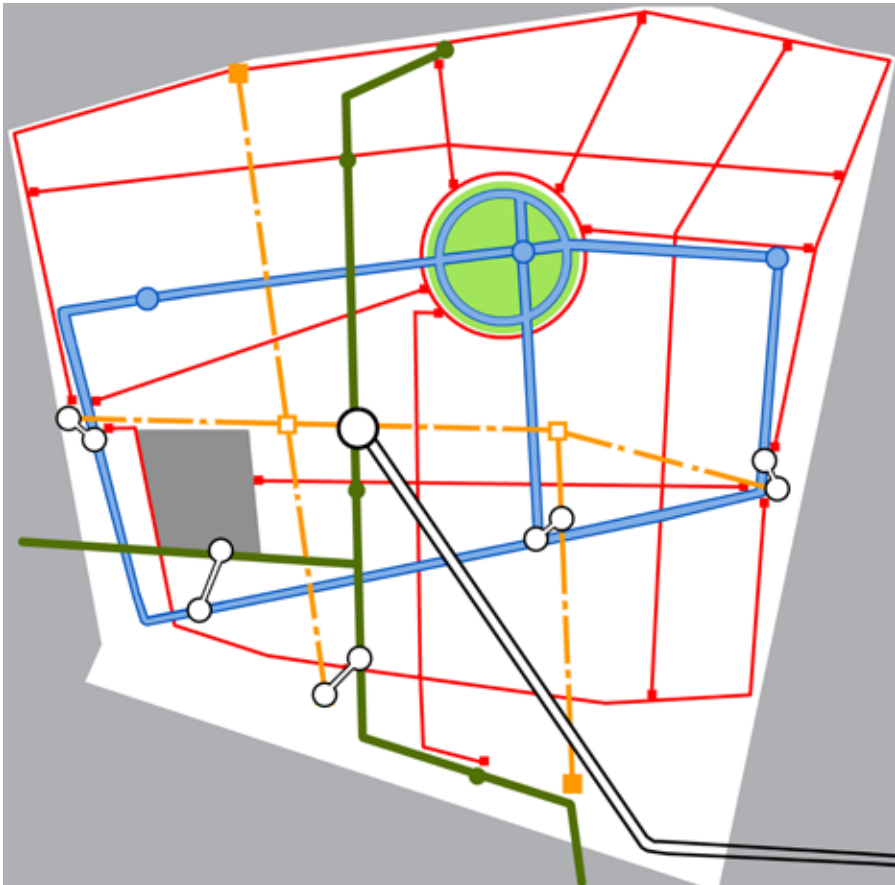


SHANGHAI : TRANSPORTATION SYSTEM IN A MEGALOPOLIS

with M. Lutzler

The development of the Shanghai megalopolis is organized with public transportation, like underground metro system. However this development does not take into account new means like tramways as the political priorities favour individual cars.

Our project focuses on establishing a new masterplan for Jiading, a satellite city of Shanghai that hosts the Formula 1 Grand Prize, by defining a pedestrian zone, a system of bus, tramways, and navigable canals, following the example of Venetian vaporettos. We propose a multimodal exchange pol in the centre of the zone. This project is the opportunity to confront a «western European» multimodal approach of public transportation with a very different urban context.

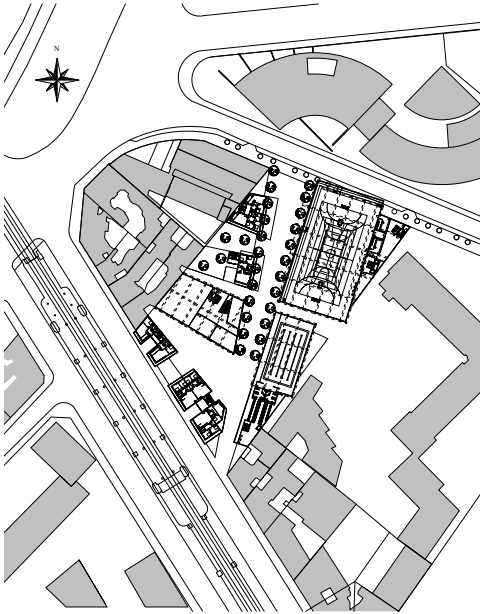


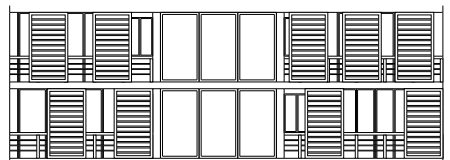
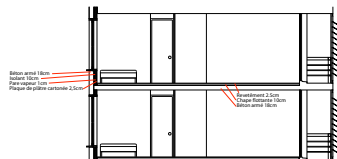
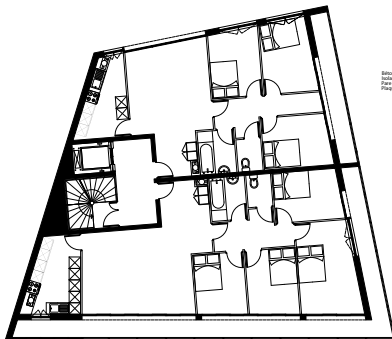


HOUSINGS IN THE BOULEVARD DE GRENELLE : LIVING THE CITY, LIVING THE ALLOTMENT

The location of the project is situated on the boulevard de Grenelle, near the embassy of Australia and the House of Japan. The site has a trapezoidal shape. We draw a diagonal in the allotment and create a perspective towards the theatrical back of the embassy, lined with housings and sports equipments. The idea is to transform the allotment into an islet, and create a new dense urban fabric. Housings of various typologies are aligned to the left.

The common principle is to model a volume on the last levels, either decreasing on the boulevard of Grenelle, or in cantilever to emphasize the perspective. The typology of the south, east and west facades is common to all the groups and consists of rolling metallic shutters which play as venetian blinds. Venetian blinds mask balconies which surround the housings. North facades are more conventional and don't have any venetian blinds, nor balconies.

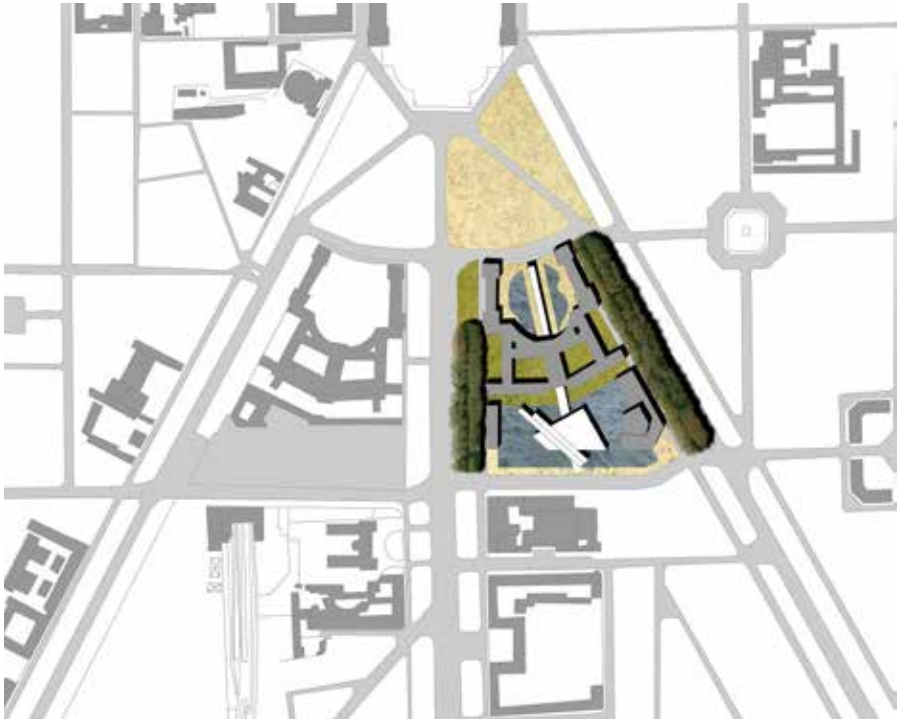


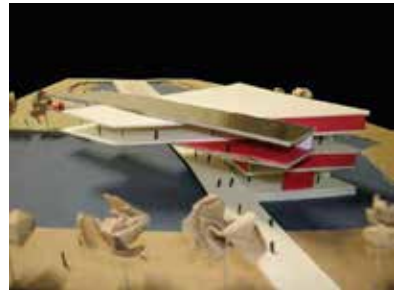
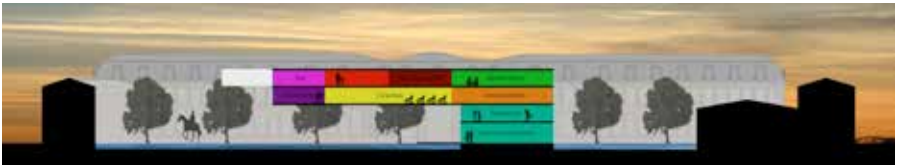


URBAN PROJECT IN VERSAILLES : HERITAGE, CONTEMPORARY AND RELATIONSHIP WITH WATER.

with A. Savignac

The city created by Louis XIV is a geometrical city reflecting the frame of the royal gardens. Our project of a media library wants to revive a poorly unattractive location, the parking lot behind the Grandes Ecuries du Roy. Water becomes the central element as the site is flooded by a shallow lake, on which our media library floats freely. The water is channelled by a canal which floods into a deeper lake, in the remodelled main courtyard, face to the palace. An axis crosses the Grandes Ecuries du Roy, joins the Palace of Versailles and splits the lake in two, like a canyon. Shops and offices can take place along.



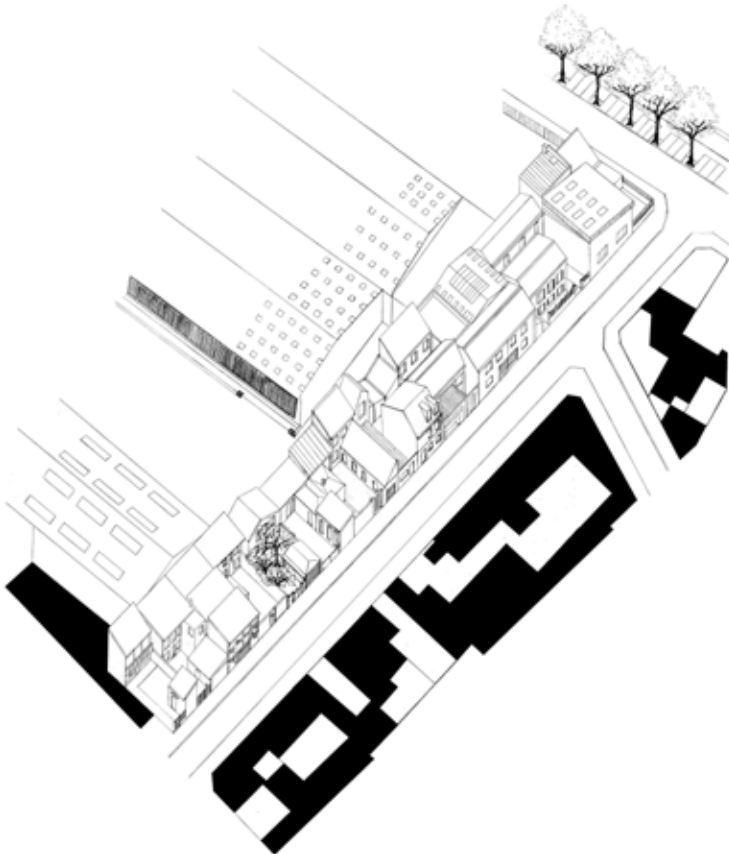


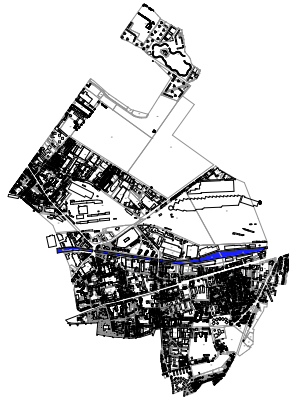
URBAN PLANNING PROJECT IN PANTIN : A NEW RELATIONSHIP BETWEEN CITY AND CANAL

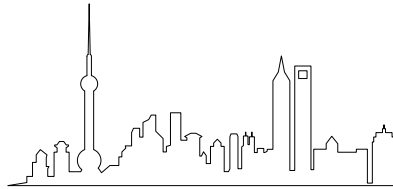
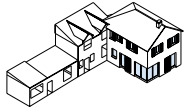
with G. Worms

A city is a « sedimentary heap» by the variety of its architectures and its atmospheres and town planning is the study. We chose to show a piece of a Parisian suburb city. This urban fabric, along the rue Cottin is quite close Pantin cemetery. It shows a front, made of housings, with several situations of allotment occupations, and courtyards in front or in the back. Behind, there are factories. We can observe that activities of different scales can live in a same urban fabric.

With some walks, we notice that the city of Pantin maintains few urban connections with the canal of Ourcq. We were interested in the avenue of General Leclerc, where raises an industrial building built by the architect Paul Chemetov, who blocks the relationship between the avenue and the canal. We choose to split the building in two by inserting, in the middle, a big green mall opening the avenue of General Leclerc to the 8 Mai 45 Park and further the canal, through an artificial mound which allows us to join the level of the bridge, stepping over the canal. We create mixed activities with industries, offices and housings on the high slab.







Architect

PORTFOLIO jabem koo

